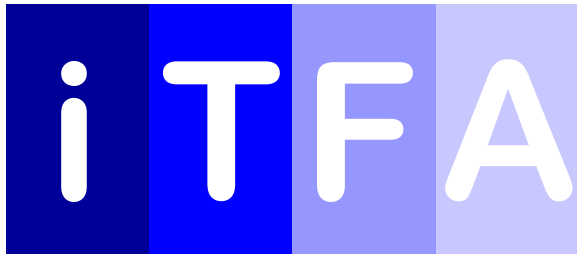


Analyz

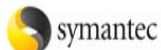
3
6
5

THERE'S NO MONITORING SOLUTION LIKE IT !!!

Analyz365 provides a whole lot more than the 'traditional' pro-active monitoring services you would expect from your IT Support Company. From a single dash board ITFA can provide the following services:



BUSINESS



Windows Servers Health Checks & 24/7 Monitoring

Typical monitoring would include looking for any disk drives that are beginning to run low on space. A typical threshold setting would alert us in the event of the Server 'C' drive falling below the 5% free mark.

Typical Server Monitoring Screenshot

Site	Server	Last Response	Last Boot Time
n Street	FILESERVER	14-Apr-2011 - 10:48	4hrs, 29mins ago
n Street	ICARUS	14-Apr-2011 - 10:43	4hrs, 52mins ago
n Street	OEBALUS	14-Apr-2011 - 10:53	36days, 20hrs, 30mins ago
n Street	OLSERVER	14-Apr-2011 - 10:45	5hrs, 52mins ago
n Street	WTS1	14-Apr-2011 - 10:45	5hrs, 51mins ago
n Street	WTS2	14-Apr-2011 - 10:41	12hrs, 52mins ago

Description	Extra	Date/Time
Disk Space Check - drive C:	Total: 29.30GB, Free: 14.58GB	14-Apr-2011 - 10:48
Disk Space Check - drive D:	Total: 430.40GB, Free: 378.63GB	14-Apr-2011 - 10:48
Windows Service Check - Backup Exec System Recovery	Status RUNNING	14-Apr-2011 - 10:48
Event Log Check - Application(Backup Exec System Recov...	More information	14-Apr-2011 - 10:48
Anti-virus Update Check - Sophos Anti-Virus	buzus-ga ide	14-Apr-2011 - 09:06
Backup Check - Symantec Backup Exec System Recovery...	drive D:\ Successful...	14-Apr-2011 - 09:06
Event Log Check - Application(Backup Exec System Recov...	More information	14-Apr-2011 - 09:06

Windows Workstation Health Checks

It is becoming increasingly important to monitor network devices out with the server itself. Analyz365 will monitor physical disk health, hacker attempts and anti-virus updates on a daily basis. The screenshot below shows the check for the anti-virus updates. By simply clicking the link ITFA can see at a glance which anti-virus signatures are currently loaded, and we can apply critical updates immediately.

Typical Desktop Monitoring Screenshot

Version	Release Date
973	14 Apr 2011 04:11 AM
971	13 Apr 2011 07:41 PM
969	13 Apr 2011 04:41 AM
967	12 Apr 2011 04:26 AM
965	11 Apr 2011 04:11 AM
▶ 963	10 Apr 2011 04:11 AM
961	09 Apr 2011 07:26 AM
959	09 Apr 2011 04:25 AM
957	08 Apr 2011 04:11 AM
955	07 Apr 2011 04:11 AM
953	06 Apr 2011 04:11 AM
951	05 Apr 2011 04:26 AM
949	04 Apr 2011 04:26 AM
947	03 Apr 2011 04:11 AM
945	02 Apr 2011 04:41 AM
943	01 Apr 2011 06:56 AM
941	31 Mar 2011 04:26 AM
939	30 Mar 2011 04:11 AM
937	29 Mar 2011 04:41 AM
935	28 Mar 2011 10:41 AM

Analyz

3
6
5

THERE'S NO MONITORING SOLUTION LIKE IT !!!

Analyz365 provides a whole lot more than the 'traditional' pro-active monitoring services you would expect from your IT Support Company. From a single dash board ITFA can provide the following services:

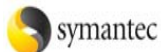
iTFA

BUSINESS

Microsoft



igaware



GFIMAX



Hardware Audits (Networked MS Windows Devices)

This tool is particularly useful. At a glance Analyz365 can report on disk size and memory processor type on all monitored devices throughout your network. Where there is Dell equipment installed on the network, Analyz365 provides a direct link to the manufactures site allowing checks on warranty information and system specification at the time of build.

Typical Hardware Inventory Screenshot

Client Inventory Report Date generated: 14 Apr 2011 11:59 AM

Client: HA

Servers: 1
Workstations: 15

Operating Systems

- Microsoft Windows 7 Professional: 15
- Microsoft® Windows Server® 2008 Standard: 1

Servers

PDC (ha.local)

Dell Inc. PowerEdge T710

Role: Primary Domain Controller
IP: 10.0.1.2 (00:25:64:F9:03:0A)
Last Scanned: 11-Apr-2011 11:15 AM
Dell Service Tag: [CPN0NU](#)

Microsoft Windows Server 2008 Standard Service Pack 2 (build 6002)
Windows Serial No.: 55041-091-1981493-78894

- Intel(R) Xeon(R) CPU E5504 @ 2.00GHz (2.00GHz, 1024KB Level 2 cache)
- Phoronix ROM BIOS PLUS Version 1.10 1.3.0: DELL - 1, 1.3.0
- 8.192 MB RAM
- DELL PERC 6i SCSI Disk Device 278.870B SCSI
- TANDBERG RDX USB Device 149.040B USB

Workstations

ANGELA-PC (ha.local)

Dell Inc. Vostro 230

Role: Member Workstation
IP: 10.0.1.112 (84:2B:28:9C:85:53)
Last Scanned: 29-Mar-2011 10:19 AM
Dell Service Tag: [C82BYA](#)

Microsoft Windows 7 Professional Service Pack 0 (build 7600)
Windows Serial No.: 00371-OEM-8962071-00524
Windows Product Key: 32KXD2-93CTF-M3DJT-4J3WC-733WD

- Pentium(R) Dual-Core CPU E8800 @ 3.06GHz (3.10GHz, 2048KB Level 2 cache)
- BIOS Date: 11/17/10 00:48:33 Ver: 08.00.15: DELL - 20101117, 1.3.0
- 2.048 MB RAM
- SAMSUNG HD322GJ ATA Device 288.09GB IDE

i0-PC (ha.local)

Dell Inc. Vostro 230

Microsoft Windows 7 Professional Service Pack 0 (build 7600)
Windows Serial No.: 00371-OEM-8962071-00524

Typical Software / License Report Screenshot

Software License Report: ITFA Ltd. Date generated: 14 Apr 2011 01:10 PM

Client: HA

All Software	Installed Count
2007 Microsoft Office Suite Service Pack 1 (SP1)	1
32 Bit HP CIO Components Installer	2
Accounts	4
Acrobat.com	1
Adobe Acrobat X Pro - English, Français, Deutsch	1
Adobe AIR	5
Adobe Flash Player 10 ActiveX	11
Adobe Flash Player 10 Plugin	14
Adobe Flash Player ActiveX	1
Adobe Reader 9.1.2	4
Adobe Reader 9.2	4
Adobe Reader 9.3.2	1
Adobe Reader 9.4.2	1
Adobe Reader 9.4.3	3
Adobe Reader X (10.0.1)	3
Advanced Monitoring Agent	16
Advanced Monitoring Agent GP	2
Alchemy Search	3
Bing Bar	1
Bing Rewards Client Installer	1
Broadcom Gigabit NetLink Controller	15
Broadcom Management Programs	15
D3DX10	1
Dell Backup and Recovery Manager	15
Dell Edoc Viewer	15
Dell Support Center	1
DirectX 9 Runtime	1
DotNet20withMsi30	1

Software / License Compliance (Networked MS Windows Devices)

Analyz365 can produce reports on installed software throughout your network. This assists our clients in conforming with license compliance. It also reports on software illegally installed or against company policy.

www.itfa.co.uk

Analyz

3
6
5

THERE'S NO MONITORING SOLUTION LIKE IT !!!

Analyz365 provides a whole lot more than the 'traditional' pro-active monitoring services you would expect from your IT Support Company. From a single dash board ITFA can provide the following services:

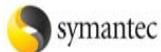
iTFA

BUSINESS

Microsoft



igaware



GFIMAX



Deployment Of Critical and Approved Updates and Patches

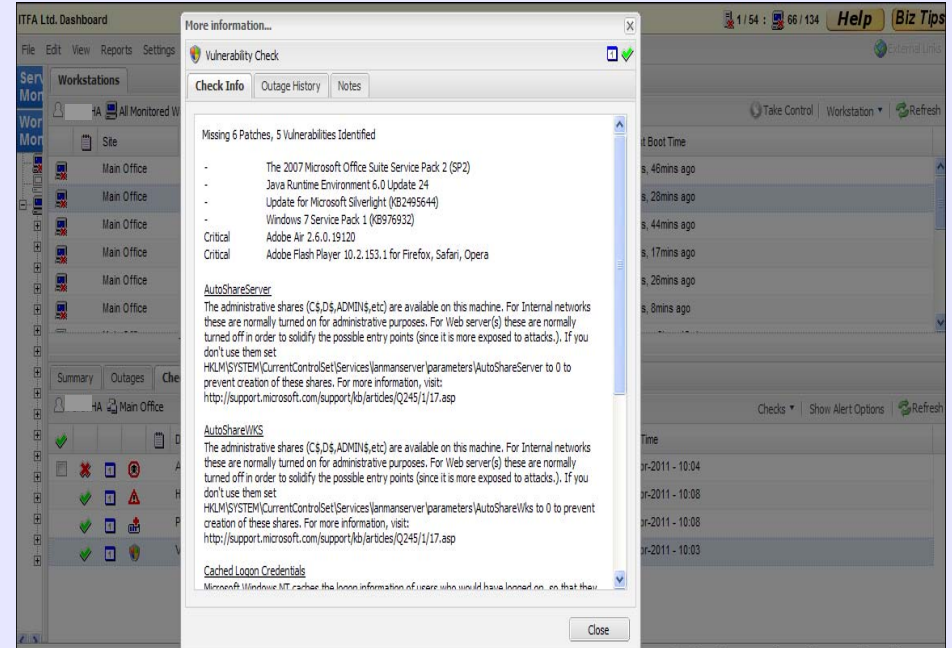
As one of Analyz365's best features, we can manage our clients server and PC security patching remotely via the Analyz365 dashboard. Updates are installed on an approved basis and mainly consist of critical updates and Microsoft recommended updates. These are deployed at pre-determined times, with servers generally being updated on a Saturday, and any server restarts also being done around this time.

This screenshot shows a report from one of the PC's on a client site where 3 patches have been identified as missing – this can be actioned immediately or set aside for future deployment. The same principles apply to servers.

COMING SOON The Latest Updates To Be Released Q2 2011:

- Managed desktop, server and e-mail anti-virus deployable from the dashboard.
- Mail archiving with queuing available for 4 days by default should your mail server fail.

Typical Patch Management Screenshot



BREAKING NEWS.....

E-MAIL COMPLIANCE UPDATE !!!

During 2011 Analyz365 from ITFA will be able to offer our customers access to a unique e-mail tagging service that will hold e-mails using the tag indefinitely. This can be used to help with e-mail retention compliance and will also have the ability to send a 'registered delivery' e-mail that will provide legal proof of delivery.

We are confident that Analyz365 is the best monitoring, reporting and security service of any IT Provider in Scotland.

If you would like to hear more about this invaluable service call us at ITFA.

www.itfa.co.uk